

**Code:** 9322 **NPN:** 80029633  
**Size:** 60 Enteripure® Softgels  
**Actual Size:** 27.36 mm x 10.74 mm



# OptiMega-3® Q10

Pharmaceutical Grade · Supports Cognitive Function and Cardiovascular Health

- Optimal 2:1 ratio EPA to DHA in a highly bioavailable softgel
- Provides 600 mg of EPA, 300 mg of DHA, and 100 mg of CoQ10 per softgel
- Pharmaceutical-grade omega-3 blend, USP verified for quality and consistency
- Free of lipid peroxides and environmental pollutants, including heavy metals, pesticides, dioxins, PCBs, and other harmful compounds
- Sourced from wild anchovies, sardines, and/or mackerel, some of the best natural sources of EPA and DHA
- Harvested through sustainable fishing practices

## PRODUCT SUMMARY

This high-potency combination of CoQ10 and the omega-3 fatty acids EPA/DHA provides cardiovascular and cognitive benefits through multiple distinct and overlapping pathways. Both CoQ10 and EPA/DHA have been shown to improve endothelial function, especially among populations at risk for atherosclerosis (elevated BMI, metabolic syndrome, smoking, hyperlipidemia), with clinically significant hypotensive and anti-atherogenic effects.

CoQ10 has an instrumental role in oxidative phosphorylation and mitochondrial bioenergetics, critical to neuronal health and prevention of the mitochondrial dysfunction that underlies numerous chronic diseases, including neurodegenerative diseases. Additionally, recent data highlights CoQ10's emerging role in reducing inflammation and insulin resistance, which are potent contributors to impaired cognitive function. Meta-analysis of randomized trials has shown CoQ10 and EPA/DHA supplementation reduces key biomarkers of inflammation, including C-reactive protein, TNF-alpha, and IL-6. CoQ10 serum levels have also been associated with neurological outcomes following ischemic stroke, as well as the risk of disabling dementia.

OptiMega-3 Q10 also provides high-dose pharmaceutical-grade EPA/DHA, shown to reduce many cardiovascular risk factors and improve vascular function, with controlled clinical trials demonstrating a reduced rate of cardiovascular and coronary events, particularly in persons at high risk. Omega-3 fatty acids have been associated with reduced myocardial infarction, as well as stroke, with supplementation mitigating adverse changes to the left ventricle, myocardial fibrosis, and systemic inflammation following a myocardial infarction. EPA and DHA support cognitive function through multiple mechanisms, as both are indispensable to neuronal membranes, with lower levels found to be not only a marker for neurological diseases, but also a risk factor for cognitive impairment.



# OPTIMEGA-3® Q10

PHARMACEUTICAL GRADE · SUPPORTS COGNITIVE FUNCTION AND CARDIOVASCULAR HEALTH

**Serving Size:** 1 Enteripure Softgel

**Servings per Container:** 60

**Each Enteripure Softgel Contains:**

Fish Oil Concentrate (Molecularly Distilled, Ultra Purified) (Anchovy, Sardine and/or Mackerel) .....	1407 mg
Omega-3 Fatty Acids .....	900 mg
Eicosapentaenoic Acid (EPA).....	600 mg
Docosahexaenoic Acid (DHA).....	300 mg
Coenzyme Q10 (Microorganism) .....	100 mg

**Non-medicinal Ingredients:** Enteripure softgel (gelatin, glycerin, purified water, pectin), natural vitamin E.

**Recommended Adult Dose:** 1 softgel 3 times per day or as directed by a health care practitioner.

**Recommended Use:** Source of omega-3 fatty acids, EPA and DHA, for the maintenance of good health. Helps support cognitive health and/or brain function and promote healthy mood balance. Helps maintain and support cardiovascular health and reduces serum triglycerides/triacylglycerols. An antioxidant for the maintenance of good health. Coenzyme Q10 promotes healthy heart function.

**Caution:** Consult a health care practitioner prior to use if you are pregnant or breastfeeding, or if you are taking blood thinners or blood pressure medication. Keep out of reach of children.

**Drug Interactions:** Because fish oil has an antithrombotic effect, caution is advised for those on anticlotting, antiplatelet, or anticoagulant medications, or those at high risk of bleeding. However, a multinational randomized and controlled trial found that fish oil did not increase perioperative bleeding, that it reduced the number of transfusions needed, and appeared to be associated with a lower risk of bleeding when given pre- and postoperatively. At doses greater than 3 g per day, hyperglycemia has been observed in diabetics and those with hypertriglyceridemia; therefore close monitoring of patients on antidiabetic medication is recommended. Benefits have been shown when fish oil is taken with statins, SSRIs, anticonvulsants, and cytotoxic medications. As CoQ10 resembles vitamin K structurally, there is a potential interaction possible for those taking the anticoagulant Coumadin. Close monitoring of the INR is recommended with CoQ10 introduction in these patients.

**Contains no artificial colours, preservatives, or sweeteners; no dairy, sugar, wheat, gluten, yeast, corn, egg, shellfish, salt, tree nuts, or GMOs.** Sealed for your protection. Do not use if seal is broken. Store in an airtight container, protected from light. For freshness, store in a cool, dry place.

References available at [bioclinicnaturals.com](http://bioclinicnaturals.com)



· GUARANTEED ·

Bioclinic Naturals® products are guaranteed to meet or exceed Good Manufacturing Practices (GMP) of the U.S. Food and Drug Administration (FDA), Health Canada, and the Therapeutic Goods Administration (TGA) of Australia.



PRODUCT OF CANADA  
Bioclinic Naturals® Canada  
Burnaby, BC V3N 4T6  
[bioclinicnaturals.com](http://bioclinicnaturals.com)

FOR PROFESSIONAL USE ONLY. This product is not intended to diagnose, treat, cure or prevent any disease.

© All Rights Reserved Bioclinic Naturals® 2020. September 23, 2020. 50294  
Bioclinic Naturals is distributed by Assured Natural Distribution Inc.

Head office Assured Natural Distribution Inc., 104 – 3686 Bonneville Place, Burnaby, BC, Canada V3N 4T6 | U.S. Distribution office 14224 167<sup>th</sup> Avenue SE, Monroe, WA, USA 98272

Customer Service 1-888-826-9625 · Fax 1-844-384-7503 · Email [customer@assurednatural.com](mailto:customer@assurednatural.com)

# Neurological Protocol: Restoring Neurological Function

## Introduction

Chronic degenerative neurological concerns are being reported more frequently in everyday clinical practice, including Parkinson’s disease, multiple sclerosis, and dementia.

## Assessment

For neurological damage or degenerative risk:

1. Thorough clinical neurological workup, potentially including CT scan, electromyography, MRI, and PET when diagnosis is uncertain.<sup>1</sup>
2. Potential laboratory considerations:
  - a. Insulin resistance assessment, such as an oral glucose tolerance test
  - b. Hemoglobin A1c
  - c. Fasting glucose
  - d. Hs-CRP
  - e. Homocysteine
  - f. Methylmalonic acid (B12)
  - g. 25-OH vitamin D levels
  - h. Anti-myelin antibodies
  - i. AST (aspartate aminotransferase)
  - j. Markers for oxidative damage and genetic risk, such as urinary levels of 8-hydroxy-deoxyguanosine and APOE gene testing, respectively

## General Recommendations

1. Monitor progress of patients using:
  - a. Standardized Mini-Mental State Examination at <https://bit.ly/2BLAFGU>
  - b. Unified Parkinson's Disease Rating Scale at <https://bit.ly/2VXwleB>
  - c. Standardized neurological exam and EDSS for multiple sclerosis at <https://bit.ly/3ffjOpS>

## Specific Treatment Plan

	Mild	Moderate	Severe
<b>Week 1:</b> Initiation Phase	<ul style="list-style-type: none"> <li>• Mediterranean-style diet<sup>2,3</sup></li> <li>• Aerobic and resistance exercise training<sup>4,5</sup></li> <li>• Calligraphy therapy<sup>6,7</sup></li> <li>• <b>BioFoundation-G</b><sup>®</sup>: 2 tablets TID with meals<sup>8,9</sup></li> </ul>	<ul style="list-style-type: none"> <li>• Mediterranean-style diet<sup>2,3</sup></li> <li>• Goal of 10,000 steps per day as assessed by pedometer, with individualized targets<sup>10</sup></li> <li>• Age-appropriate yoga: Three 55-minute sessions per week<sup>11,12</sup></li> <li>• <b>BioFoundation-G</b>: 2 tablets TID with meals<sup>8,9</sup></li> </ul>	<ul style="list-style-type: none"> <li>• Mediterranean-style diet<sup>2,3</sup></li> <li>• Tai Chi: 60 minutes twice weekly<sup>13,14</sup></li> <li>• <b>BioFoundation-G</b>: 2 tablets TID with meals<sup>8,9</sup></li> </ul>
<b>Week 2-7:</b> Intensive Therapy Phase	<ul style="list-style-type: none"> <li>• <b>BioFoundation-G</b>: 2 tablets TID with meals<sup>8,9</sup></li> <li>• <b>Mito AMP</b><sup>®</sup>: 1 softgel per day<sup>15-17</sup></li> <li>• <b>PQQ-10</b><sup>®</sup>: 1 softgel per day<sup>18,19</sup></li> <li>• <b>OptiMega-3</b><sup>®</sup>: 1 softgel BID with meals<sup>20-22</sup></li> <li>• <b>Vitamin D3</b>: 1000 IU QD<sup>23,24</sup></li> </ul>	<ul style="list-style-type: none"> <li>• <b>BioFoundation-G</b>: 2 tablets TID with meals<sup>8,9</sup></li> <li>• <b>Mito AMP</b>: 2 softgels per day<sup>15-17</sup></li> <li>• <b>PQQ-10</b>: 2 softgels per day<sup>18,19</sup></li> <li>• <b>OptiMega-3</b>: 1 softgel BID with meals<sup>20-22</sup></li> <li>• <b>Theracurmin</b><sup>® 2X</sup>: 1 capsule BID<sup>25</sup></li> <li>• <b>Vitamin D3</b>: 2000 IU QD<sup>23,24</sup></li> </ul>	<ul style="list-style-type: none"> <li>• <b>BioFoundation-G</b>: 2 tablets TID with meals<sup>8,9</sup></li> <li>• <b>Mito AMP</b>: 3 softgels per day<sup>15-17</sup></li> <li>• <b>PQQ-10</b>: 3 softgels per day<sup>18,19</sup></li> <li>• <b>OptiMega-3</b>: 1 softgel BID with meals<sup>20-22</sup></li> <li>• <b>Theracurmin 2X</b>: 1 capsule BID<sup>25</sup></li> <li>• <b>Vitamin D3</b>: 2000 IU QD<sup>23,24</sup></li> <li>• <b>N-Acetyl-L-Cysteine</b>: 1 capsule TID<sup>26</sup></li> <li>• <b>Melatonin</b>: 3–5 mg at night<sup>27</sup></li> </ul>

<p><b>Week 8:</b> Maintenance Phase</p>	<ul style="list-style-type: none"> <li>• Mediterranean-style diet<sup>2,3</sup></li> <li>• Aerobic and resistance exercise training<sup>4,5</sup></li> <li>• <b>BioFoundation-G:</b> 2 tablets TID with meals<sup>8,9</sup></li> </ul>	<ul style="list-style-type: none"> <li>• Mediterranean-style diet<sup>2,3</sup></li> <li>• Aerobic and resistance exercise training<sup>4,5</sup></li> <li>• <b>BioFoundation-G:</b> 2 tablets TID with meals<sup>8,9</sup></li> <li>• <b>Mito AMP:</b> 1 softgel per day<sup>15-17</sup></li> <li>• <b>PQQ-10:</b> 2 softgels per day<sup>18,19</sup></li> <li>• <b>OptiMega-3:</b> 1 softgel BID with meals<sup>20-22</sup></li> <li>• <b>Theracurmin 2X:</b> 1 capsule QD<sup>25</sup></li> <li>• <b>Vitamin D3:</b> 1000 IU QD<sup>23,24</sup></li> </ul>	<ul style="list-style-type: none"> <li>• Mediterranean-style diet<sup>2,3</sup></li> <li>• Aerobic and resistance exercise training<sup>4,5</sup></li> <li>• <b>BioFoundation-G:</b> 2 tablets TID with meals<sup>8,9</sup></li> <li>• <b>Mito AMP:</b> 2 softgels per day<sup>15-17</sup></li> <li>• <b>PQQ-10:</b> 2 softgels per day<sup>18,19</sup></li> <li>• <b>OptiMega-3:</b> 1 softgel BID with meals<sup>20-22</sup></li> <li>• <b>Theracurmin 2X:</b> 1 capsule BID<sup>25</sup></li> <li>• <b>Vitamin D3:</b> 1000 IU QD<sup>23,24</sup></li> <li>• <b>N-Acetyl-L-Cysteine:</b> 1 capsule BID<sup>26</sup></li> </ul>
---	--	---	---

QD: daily; BID: two times per day; TID: three times per day.

## Re-assessment

Repeat clinical and laboratory measurements.

### REFERENCES:

- Hellwig, S., Domschke, K., & Meyer, P. T. (2019). Update on PET in neurodegenerative and neuroinflammatory disorders manifesting on a behavioural level: imaging for differential diagnosis. *Current Opinion in Neurology*, 32(4), 548-556.
- Peterson, S. D., & Philippou, E. (2016). Mediterranean diet, cognitive function, and dementia: a systematic review of the evidence. *Advances in Nutrition*, 7(5), 889-904.
- Pérez-López, F. R., Chedraui, P., Haya, J., et al. (2009). Effects of the Mediterranean diet on longevity and age-related morbid conditions. *Maturitas*, 64(2), 67-79.
- Muscari, A., Giannoni, C., Pierpaoli, L., et al. (2010). Chronic endurance exercise training prevents aging-related cognitive decline in healthy older adults: a randomized controlled trial. *International Journal of Geriatric Psychiatry*, 25(10), 1055-1064.
- Lautenschlager, N. T., Cox, K. L., Flicker, L., et al. (2008). Effect of physical activity on cognitive function in older adults at risk for Alzheimer disease: a randomized trial. *JAMA*, 300(9), 1027-1037.
- Kwok, T. C., Bai, X., Kao, H. S., et al. (2011). Cognitive effects of calligraphy therapy for older people: a randomized controlled trial in Hong Kong. *Clinical Interventions in Aging*, 6, 269-273.
- Chan, S. C. C., Chan, C. C. H., Derbie, A. Y., et al. (2017). Chinese calligraphy writing for augmenting attentional control and working memory of older adults at risk of mild cognitive impairment: a randomized controlled trial. *Journal of Alzheimer's Disease*, 58(3), 735-746.
- Sarubbo, F., Esteban, S., Miralles, A., et al. (2018). Effects of resveratrol and other polyphenols on Sirt1: Relevance to brain function during aging. *Current Neuropharmacology*, 16(2), 126-136.
- Lanzillotta, C., Di Domenico, F., Perluigi, M., et al. (2019). Targeting mitochondria in Alzheimer disease: Rationale and perspectives. *CNS Drugs*, 33(10), 957-969.
- Karssemeijer, E. G. A., Aaronson, J. A., Bossers, W. J., et al. (2017). Positive effects of combined cognitive and physical exercise training on cognitive function in older adults with mild cognitive impairment or dementia: A meta-analysis. *Ageing Research Review*, 40, 75-83.
- Sivaramakrishnan, D., Fitzsimons, C., Kelly, P., et al. (2019). The effects of yoga compared to active and inactive controls on physical function and health related quality of life in older adults – systematic review and meta-analysis of randomised controlled trials. *International Journal of Behavioral Nutrition and Physical Activity*, 16(1), 33.
- Fan, J. T., & Chen, K. M. (2011). Using silver yoga exercises to promote physical and mental health of elders with dementia in long-term care facilities. *International Psychogeriatrics*, 23(8), 1222-1230.
- Li, F., Harmer, P., Fitzgerald, K., et al. (2012). Tai chi and postural stability in patients with Parkinson's disease. *New England Journal of Medicine*, 366(6), 511-519.
- Lim, K. H., Pysklywec, A., Plante, M., et al. (2019). The effectiveness of Tai Chi for short-term cognitive function improvement in the early stages of dementia in the elderly: a systematic literature review. *Clinical Interventions in Aging*, 14, 827-839.
- Yubero-Serrano, E. M., Delgado-Casado, N., Delgado-Lista, J., et al. (2011). Postprandial antioxidant effect of the Mediterranean diet supplemented with coenzyme Q10 in elderly men and women. *Age (Dordr)*, 33(4), 579-590.
- Bianchetti, A., Rozzini, R., & Trabucchi, M. (2003). Effects of acetyl-L-carnitine in Alzheimer's disease patients unresponsive to acetylcholinesterase inhibitors. *Current Medical Research and Opinion*, 19(4), 350-353.
- Waslo, C., Bourdette, D., Gray, N., et al. (2019). Lipoic Acid and Other Antioxidants as Therapies for Multiple Sclerosis. *Current Treatment Options in Neurology*, 21(6):26.
- Chowanadisai, W., Bauerly, K., Tchapanian, E., et al. (2007). Pyrroloquinoline quinone (PQQ) stimulates mitochondrial biogenesis. *FASEB Journal*, 21, 854.
- Harris, C. B., Chowanadisai, W., Mishchuk, D. O., et al. (2013). Dietary pyrroloquinoline quinone (PQQ) alters indicators of inflammation and mitochondrial-related metabolism in human subjects. *Journal of Nutritional Biochemistry*, 24(12), 2076-2084.
- Chiu, C. C., Su, K. P., Cheng, T. C., et al. (2008). The effects of omega-3 fatty acids monotherapy in Alzheimer's disease and mild cognitive impairment: a preliminary randomized double-blind placebo-controlled study. *Progress in Neuropsychopharmacology & Biology Psychiatry*, 32(6), 1538-1544.
- Shinto, L., Marracci, G., Baldauf-Wagner, S., et al. (2009). Omega-3 fatty acid supplementation decreases matrix metalloproteinase-9 production in relapsing-remitting multiple sclerosis. *Prostaglandins, Leukotrienes & Essential Fatty Acids*, 80(2-3), 131-136.
- Martí Del Moral, A., & Fortique, F. (2019). Omega-3 fatty acids and cognitive decline: a systematic review. *Nutricion Hospitalaria*, 36(4), 939-949.
- Llewellyn, D. J., Lang, I. A., Langa, K. M., et al. (2010). Vitamin D and risk of cognitive decline in elderly persons. *Archives of Internal Medicine*, 170(13), 1135-1141.
- Pierrot-Deseilligny, C., & Souberbielle, J. C. (2017). Vitamin D and multiple sclerosis: An update. *Multiple Sclerosis and Related Disorders*, 14, 35-45.
- Small, G. W., Siddarth, P., Li, Z., et al. (2018). Memory and brain amyloid and tau effects of a bioavailable form of curcumin in non-demented adults: a double-blind, placebo-controlled 18-month trial. *American Journal of Geriatric Psychiatry*, 26(3), 266-277.
- Tardiolo, G., Bramanti, P., & Mazzon, E. (2018). Overview on the effects of N-acetylcysteine in neurodegenerative diseases. *Molecules*, 23(12), 3305.
- Asayama, K., Yamadera, H., Ito, T., et al. (2003). Double blind study of melatonin effects on the sleep-wake rhythm, cognitive and non-cognitive functions in Alzheimer type dementia. *Journal of Nippon Medical School*, 70(4), 334-341.
- Spinedi, E., & Cardinali, D. P. (2019). Neuroendocrine-metabolic dysfunction and sleep disturbances in neurodegenerative disorders: focus on Alzheimer's disease and melatonin. *Neuroendocrinology*, 108(4), 354-364.

# Osteoarthritis Protocol: Restoring Joint Function

## Introduction

Osteoarthritis (OA) is the most common type of arthritis, affecting nearly five million Canadians<sup>1</sup> and over 32 million US adults<sup>2</sup>.

## Assessment

1. Physical exam and imaging:
  - a. Clinical diagnosis in those over age 45 with activity-related joint pain and no morning stiffness or no stiffness that lasts more than 30 minutes, after excluding atypical features, including history of trauma, hot swollen joint, gout, etc.<sup>3</sup>
  - b. Plain X-rays can help confirm the diagnosis but are insensitive early in the disease, though they may be useful for ruling out other etiologies. Findings include narrowed joint spaces and/or osteophytes. MRI is useful for more complicated diagnoses.<sup>4</sup>
  - c. See American College of Rheumatology Guidelines for Osteoarthritis of the Hip, Knee, and Hand.<sup>5</sup>
2. Laboratory:
  - a. Laboratory evaluation is not typically indicated, though CRP and/or ESR can be used to rule out other inflammatory conditions.

## General Recommendations

1. Monitor progress of patients using:
  - a. KOOS Knee Scale and HOOS Scale for osteoarthritis of the hip at <http://www.koos.nu/> or WOMAC Scale at <https://www.orthopaedicscore.com/>
  - b. Oswestry Low Back Pain Disability Index at <https://bit.ly/3eWKm2Z>
  - c. Michigan Hand Outcome Questionnaire at <https://bit.ly/2X0V7uW>

## Specific Treatment Plan

	Mild	Moderate	Severe
<b>Osteoarthritis</b>	<ul style="list-style-type: none"> <li>• Weight loss<sup>6,7</sup></li> <li>• Acupuncture<sup>8,9</sup></li> <li>• Exercise<sup>10</sup></li> <li>• Massage<sup>11,12</sup></li> <li>• <b>Theracurmin® 2X</b>: 1 capsule QD<sup>13-16</sup></li> </ul>	<ul style="list-style-type: none"> <li>• Knee: manual therapy<sup>17</sup></li> <li>• <b>Vitamin D3</b>: 1000–2000 IU QD; if low serum levels of 25 (OH) vitamin D, 5000 IU QD<sup>18</sup></li> <li>• <b>Dolor Ease™</b>: 2 capsules BID <i>OR</i> <b>Theracurmin 2X</b>: 1 capsule BID<sup>13-16</sup></li> <li>• <b>OptiMega-3®</b>: 1 capsule BID with meals<sup>19</sup></li> <li>• <b>PEA</b>: 1 capsule TID<sup>20</sup></li> </ul>	<ul style="list-style-type: none"> <li>• May require the use of prescription medications and/or joint replacement as part of the integrated protocol</li> <li>• <b>Vitamin D3</b>: 1000–2000 IU QD; if low serum levels of 25 (OH) vitamin D, 5000 IU QD<sup>18</sup></li> <li>• <b>Dolor Ease</b>: 2 capsules BID <i>OR</i> <b>Theracurmin 2X</b>: 1 capsule BID<sup>13-16</sup></li> <li>• <b>OptiMega-3</b>: 1 capsule BID with meals<sup>19</sup></li> <li>• <b>SAME</b>: 400 mg QID<sup>21</sup></li> <li>• <b>PEA</b>: 1 capsule TID<sup>20</sup></li> </ul>

QD: daily; BID: two times per day; TID: three times per day; QID: four times per day; PEA: Palmitoylethanolamide

## Re-Assessment

Repeat clinical and laboratory measurements as indicated.

## REFERENCES:

1. The Arthritis Society. (2020). Osteoarthritis. Retrieved from [https://arthritis.ca/about-arthritis/arthritis-types-\(a-z\)/types/osteoarthritis](https://arthritis.ca/about-arthritis/arthritis-types-(a-z)/types/osteoarthritis)
2. Centers for Disease Control and Prevention. (2020). Osteoarthritis (OA). Retrieved from <http://www.cdc.gov/arthritis/basics/osteoarthritis.htm>
3. Johns Hopkins Arthritis Center. (2020). ACR Clinical Classification Criteria for Osteoarthritis. Retrieved from [http://www.hopkinsarthritis.org/physician-corner/education/arthritis-education-diagnostic-guidelines/#class\\_knee](http://www.hopkinsarthritis.org/physician-corner/education/arthritis-education-diagnostic-guidelines/#class_knee)
4. Braun, H. J., & Gold, G. E. (2012). Diagnosis of osteoarthritis: imaging. *Bone*, *51*(2), 278-288.
5. American College of Rheumatology. (2020). Clinical Practice Guidelines. Retrieved from <https://www.rheumatology.org/Practice-Quality/Clinical-Support/Clinical-Practice-Guidelines/Osteoarthritis> Accessed 5-2020
6. Koonce, R. C., & Bravman, J. T. (2013). Obesity and osteoarthritis: more than just wear and tear. *Journal of the American Academy of Orthopaedic Surgeons*, *21*(3), 161-169.
7. Wang, T., & He, C. (2018). Pro-inflammatory cytokines: The link between obesity and osteoarthritis. *Cytokine Growth Factor Review*, *44*, 38-50.
8. Berman, B. M., Lao, L., Langenberg, P., et al. (2004). Effectiveness of acupuncture as adjunctive therapy in osteoarthritis of the knee: a randomized, controlled trial. *Annals of Internal Medicine*, *141*(12), 901-910.
9. Vickers, A. J., Vertosick, E. A., Lewith, G., et al. (2018). Acupuncture for chronic pain: update of an individual patient data meta-analysis. *Journal of Pain*, *19*(5), 455-474.
10. Gaught, A. M., & Carneiro, K. A. (2013). Evidence for determining the exercise prescription in patients with osteoarthritis. *The Physician and Sportsmedicine*, *41*(1), 58-65.
11. Perlman, A. I., Sabina, A., Williams, A. L., et al. (2006). Massage therapy for osteoarthritis of the knee: a randomized controlled trial. *Archives of Internal Medicine*, *166*(22), 2533-2538.
12. Nelson, N. L., & Churilla, J. R. (2017). Massage therapy for pain and function in patients with arthritis: a systematic review of randomized controlled trials. *American Journal of Physical Medicine & Rehabilitation*, *96*(9), 665-672.
13. Henrotin, Y., Priem, F., & Mobasheri, A. (2013). Curcumin: a new paradigm and therapeutic opportunity for the treatment of osteoarthritis: curcumin for osteoarthritis management. *Springerplus*, *2*(1), 56.
14. Daily, J. W., Yang, M., & Park, S. (2016). Efficacy of turmeric extracts and curcumin for alleviating the symptoms of joint arthritis: a systematic review and meta-analysis of randomized clinical trials. *Journal of Medicinal Food*, *19*(8), 717-729.
15. Nakagawa, Y., Mukai, S., Yamada, S., et al. (2014). Short-term effects of highly-bioavailable curcumin for treating knee osteoarthritis: a randomized, double-blind, placebo-controlled prospective study. *Journal of Orthopaedic Science*, *19*(6), 933-939.
16. Majeed, M., Majeed, S., Narayanan, N. K., et al. (2019). A pilot, randomized, double-blind, placebo-controlled trial to assess the safety and efficacy of a novel *Boswellia serrata* extract in the management of osteoarthritis of the knee. *Phytotherapy Research*, *33*(5), 1457-1468.
17. Xu, Q., Chen, B., Wang, Y., et al. (2017). The effectiveness of manual therapy for relieving pain, stiffness, and dysfunction in knee osteoarthritis: a systematic review and meta-analysis. *Pain Physician*, *20*(4), 229-243.
18. Manoy, P., Yuktanandana, P., Tanavalee, A., et al. (2017). Vitamin D supplementation improves quality of life and physical performance in osteoarthritis patients. *Nutrients*, *9*(8), 799.
19. Hill, C. L., March, L. M., Aitken, D., et al. (2016). Fish oil in knee osteoarthritis: a randomised clinical trial of low dose versus high dose. *Annals of the Rheumatic Diseases*, *75*(1), 23-29.
20. Gatti, A., Lazzari, M., Gianfelice, V., et al. (2012). Palmitoylethanolamide in the treatment of chronic pain caused by different etiopathogenesis. *Pain Medicine*, *13*(9), 1121-1130.
21. Najm, W. I., Reinsch, S., Hoehler, F., et al. (2004). S-adenosyl methionine (SAME) versus celecoxib for the treatment of osteoarthritis symptoms: a double-blind cross-over trial. [ISRCTN36233495]. *BMC Musculoskeletal Disorders*, *5*, 6.



# Acute Musculoskeletal Protocol: Reducing Pain

## Introduction

Acute pain (present for less than 3 months) can be medically managed through appropriate assessment, patient monitoring, and various integrative modalities, as outlined below.

## Assessment

For musculoskeletal pain history and physical exam, including:

1. Pain history: elements include the site, onset, distribution, quality, duration, temporal factors, intensity, aggravating and relieving factors, impact on daily living, associated symptoms, previous similar symptoms, and current and previous treatments.<sup>1</sup>
2. Physical functioning and quality of life.
3. Emotional functioning:
  - a. Pain is now widely recognized to be a multi-factorial experience and should be understood as part of a biopsychosocial perspective. (See Distress and Risk Assessment Method [DRAM] intake below.)
4. Patient ratings of improvement or worsening of the pain.<sup>2</sup>
5. Define the involved structure using the following algorithm:<sup>3</sup>
  - a. Watch for referred pain patterns from deep spinal structures.
  - b. Use all necessary clinical skills and imaging.
  - c. Specify location of pain.
  - d. Define clinical process triggering the pain.
  - e. Name the problem: inflammation, degeneration, strain, sprain, etc.
  - f. Look for red flag clues for serious illness and yellow flag clues for psychosocial issues.
  - g. Develop a working diagnosis and management plan in conjunction with the patient.

## General Recommendations

1. Monitor progress of patients using:
  - a. McGill Pain Inventory: <https://bit.ly/39BFsYh>
  - b. Oswestry Low Back Pain Disability Questionnaire: <https://bit.ly/3eWkmZZ>
  - c. PSQI: Pittsburgh Sleep Quality Index: <https://bit.ly/3hrICQO>  
 Sleep has been shown to influence both acute and chronic pain perception.<sup>4</sup>
  - d. Hamilton Depression Scale: <https://bit.ly/39oBTEB>  
 Depression has been shown to influence the transition from acute to chronic pain.<sup>5</sup>
  - e. Distress and Risk Assessment Method (DRAM): <https://bit.ly/2ZWXxgb>

## Specific Treatment Plan

Acute Pain	Mild	Moderate	Severe
<b>Sprain/strain</b>	<ul style="list-style-type: none"> <li>• RICE</li> <li>• <b>Dolor Ease™</b>: 1 capsule BID <i>OR</i> <b>Theracurmin® 2X</b>: 1 capsule QD</li> <li>• <b>Synerase®</b>: 2 capsules TID in between meals<sup>6</sup></li> </ul>	<ul style="list-style-type: none"> <li>• RICE</li> <li>• Exercise-based rehabilitation and early mobilization associated with improved outcomes<sup>7</sup></li> <li>• <b>Dolor Ease</b>: 2 capsules BID <i>OR</i> <b>Theracurmin 2X</b>: 1–2 capsules QD</li> <li>• <b>Synerase</b>: 3 capsules TID in between meals<sup>6</sup></li> <li>• <b>PEA</b>: 1 capsule TID<sup>8</sup></li> </ul>	May require the use of prescription medications as part of the integrated protocol
<b>Contusion</b>	<ul style="list-style-type: none"> <li>• RICE</li> <li>• <b>Dolor Ease</b>: 1 capsule BID <i>OR</i> <b>Theracurmin 2X</b>: 1 capsule QD</li> <li>• <b>Synerase</b>: 2 capsules TID in between meals<sup>9</sup></li> </ul>	<ul style="list-style-type: none"> <li>• RICE</li> <li>• <b>Dolor Ease</b>: 2 capsules BID <i>OR</i> <b>Theracurmin 2X</b>: 1–2 capsules QD</li> <li>• <b>Synerase</b>: 3 capsules TID in between meals<sup>9</sup></li> </ul>	May require the use of prescription medications as part of the integrated protocol

<p><b>Myalgia</b></p>	<ul style="list-style-type: none"> <li>• RICE</li> <li>• <b>Dolor Ease:</b> 1 capsule BID OR <b>Theracurmin 2X:</b> 1 capsule QD<sup>10</sup></li> <li>• <b>Magnesium Bisglycinate:</b> 200 mg BID with food<sup>11,12</sup></li> <li>• <b>Synerase:</b> 2 capsules TID in between meals<sup>13</sup></li> </ul>	<ul style="list-style-type: none"> <li>• RICE</li> <li>• <b>Dolor Ease:</b> 2 capsules BID OR <b>Theracurmin 2X:</b> 1–2 capsules QD</li> <li>• <b>Ubiquinol CoQ10 200 mg:</b> 1 softgel QD<sup>14,15</sup></li> <li>• <b>Mito AMP®:</b> 2 capsules BID<sup>16,17</sup></li> <li>• <b>Magnesium Bisglycinate:</b> 200 mg BID with food<sup>11,12</sup></li> <li>• <b>Synerase:</b> 3 capsules TID in between meals<sup>13</sup></li> <li>• <b>OptiMega-3®:</b> 1 softgel BID with meals<sup>18,19</sup></li> </ul>	<p>May require the use of prescription medications as part of the integrated protocol</p>
<p><b>Arthralgia</b></p>	<ul style="list-style-type: none"> <li>• RICE</li> <li>• <b>Dolor Ease:</b> 1 capsule BID OR <b>Theracurmin 2X:</b> 1 capsule QD</li> <li>• <b>Synerase:</b> 2 capsules TID in between meals<sup>20,21</sup></li> <li>• <b>PEA:</b> 1 capsule TID<sup>8</sup></li> </ul>	<ul style="list-style-type: none"> <li>• RICE</li> <li>• <b>Dolor Ease:</b> 2 capsules BID OR <b>Theracurmin 2X:</b> 1–2 capsules QD</li> <li>• <b>Synerase:</b> 3 capsules TID in between meals<sup>20,21</sup></li> <li>• <b>OptiMega-3:</b> 1 softgel BID with meals<sup>22</sup></li> <li>• <b>PEA:</b> 1 capsule TID<sup>8</sup></li> </ul>	<p>May require the use of prescription medications as part of the integrated protocol</p>

QD: daily; BID: two times per day; TID: three times per day; RICE: Rest, Ice, Compression, Elevation; PEA: Palmitoylethanolamide

## Re-Assessment

Repeat clinical and laboratory measurements as indicated. Confirm progress with treatment or re-assess barriers to improvement, including possible red/yellow flags that did not present earlier.

### REFERENCES:

1. Australian Acute Musculoskeletal Pain Guidelines Group. (2003). Evidence-based Management of Acute Musculoskeletal Pain. Retrieved from <http://cdha.nshhealth.ca/system/files/sites/122/documents/management-acute-musculoskeletal-pain.pdf>
2. Salaffi, F., Ciapetti, A., & Carotti, M. (2012). Pain assessment strategies in patients with musculoskeletal conditions. *Reumatismo*, 64(4), 216-229.
3. Littlejohn, G. O. (2005). Musculoskeletal pain. *Journal of the Royal College of Physicians of Edinburgh*, 35, 340-344.
4. Lewandowski Holley, A., Rabbitts, J., Zhou, C., et al. (2017). Temporal daily associations among sleep and pain in treatment-seeking youth with acute musculoskeletal pain. *Journal of Behavioral Medicine*, 40(4), 675-681.
5. Holley, A. L., Wilson, A. C., & Palermo, T. M. (2017). Predictors of the transition from acute to persistent musculoskeletal pain in children and adolescents: a prospective study. *Pain*, 158(5), 794-801.
6. Panagariya, A., & Sharma, A. K. (1999). A preliminary trial of serratiopeptidase in patients with carpal tunnel syndrome. *Journal of the Association of Physicians of India*, 47(12), 1170-1172.
7. Bleakley, C. M., Taylor, J. B., Dischiavi, S. L., et al. (2019). Rehabilitation exercises reduce reinjury post ankle sprain, but the content and parameters of an optimal exercise program have yet to be established: a systematic review and meta-analysis. *Archives of Physical Medicine and Rehabilitation*, 100(7), 1367-1375.
8. Artukoglu, B. B., Beyer, C., Zuloff-Shani, A., et al. (2017). Efficacy of palmitoylethanolamide for pain: A meta-analysis. *Pain Physician*, 20(5), 353-362.
9. Masson, M. (1995). Bromelain in blunt injuries of the locomotor system. A study of observed applications in general practice. *Fortschritte der Medizin (German)*, 113(19), 303-306.
10. Nicol, L. M., Rowlands, D. S., Fazakerly, R., et al. (2015). Curcumin supplementation likely attenuates delayed onset muscle soreness (DOMS). *European Journal of Applied Physiology*, 115(8), 1769-1777.
11. Abbott, L. G., & Rude, R. K. (1993). Clinical manifestations of magnesium deficiency. *Mineral and Electrolyte Metabolism*, 19(4-5), 314-322.
12. Steward, C. J., Zhou, Y., Keane, G., et al. (2019). One week of magnesium supplementation lowers IL-6, muscle soreness and increases post-exercise blood glucose in response to downhill running. *European Journal of Applied Physiology*, 119(11-12), 2617-2627.
13. Miller, P. C., Bailey, S. P., Barnes, M. E., et al. (2004). The effects of protease supplementation on skeletal muscle function and DOMS following downhill running. *Journal of Sports Sciences*, 22(4), 365-372.
14. Díaz-Castro, J., Guisado, R., Kajarabille, N., et al. (2012). Coenzyme Q(10) supplementation ameliorates inflammatory signaling and oxidative stress associated with strenuous exercise. *European Journal of Nutrition*, 51(7), 791-799.
15. Sarmiento, A., Diaz-Castro, J., Pulido-Moran, M., et al. (2016). Short-term ubiquinol supplementation reduces oxidative stress associated with strenuous exercise in healthy adults: A randomized trial. *Biofactors*, 42(6), 612-622.
16. Giamberardino, M. A., Dragani, L., Valente, R., et al. (1996). Effects of prolonged L-carnitine administration on delayed muscle pain and CK release after eccentric effort. *International Journal of Sports Medicine*, 17(5), 320-324.
17. Memeo, A., & Loiero, M. (2008). Thioctic acid and acetyl-L-carnitine in the treatment of sciatic pain caused by a herniated disc: a randomized, double-blind, comparative study. *Clinical Drug Investigation*, 28(8), 495-500.
18. Jakeman, J. R., Lambrick, D. M., Wooley, B., et al. (2017). Effect of an acute dose of omega-3 fish oil following exercise-induced muscle damage. *European Journal of Applied Physiology*, 117(3), 575-582.
19. Tsuchiya, Y., Yanagimoto, K., Ueda, H., et al. (2019). Supplementation of eicosapentaenoic acid-rich fish oil attenuates muscle stiffness after eccentric contractions of human elbow flexors. *Journal of the International Society of Sports Nutrition*, 16(1), 19.
20. Kasemsuk, T., Saengpetch, N., Sibmooh, N., et al. (2016). Improved WOMAC score following 16-week treatment with bromelain for knee osteoarthritis. *Clinical Rheumatology*, 35(10), 2531-2540.
21. Walker, A. F., Bundy, R., Hicks, S. M., et al. (2002). Bromelain reduces mild acute knee pain and improves well-being in a dose-dependent fashion in an open study of otherwise healthy adults. *Phytomedicine*, 9(8), 681-686.
22. Hill, C. L., March, L. M., Aitken, D., et al. (2016). Fish oil in knee osteoarthritis: a randomised clinical trial of low dose versus high dose. *Annals of Rheumatic Diseases*, 75(1), 23-29.



# Rheumatoid Arthritis Protocol: Restoring Joint Function

## Introduction

It is estimated that 300,000 Canadians have rheumatoid arthritis (RA).<sup>1</sup>

## Assessment

1. Thorough physical exam focusing on:
  - a. Mild-to-moderate joint swelling.
  - b. Crepitus on movement.
  - c. Pain with movement of joint and in particular at the end of its range of motion.
  - d. Joint tenderness.
  - e. Mild inflammation and warmth over the joint.
  - f. See American College of Rheumatology Guidelines for RA diagnosis.<sup>2</sup>
  - g. Patients may also present with fatigue, weight loss, and anemia on initial presentation. Additionally, many non-joint signs/symptoms may be overlooked, including accelerated atherosclerosis (leading cause of death among individuals with RA), episcleritis, neuropathy, vasculitis with severe RA, etc. (See Wasserman 2018 for a complete list of extra-articular manifestations).
2. Laboratory – the target population for testing are patients with at least one joint with definite clinical synovitis, not better explained by another disease:
  - a. High-sensitivity CRP (hs-CRP) and ESR.
  - b. Rheumatoid factor and anti-citrullinated protein antibody.
    - Upon initial diagnosis, CRP is elevated in 39%, rheumatoid factor (IgM) in 44%, and anti-citrullinated protein antibody in 39%.<sup>3</sup>
  - c. Vitamin D: 1,25-(OH)<sub>2</sub> Vitamin D levels have been shown to be inversely associated with disease activity.<sup>4</sup> Meta-analysis of 25 (OH) vitamin D levels has also been shown to be inversely related to disease activity.<sup>5</sup> Polymorphisms within the vitamin D receptor (VDR) gene also appear to influence risk, even in the presence of normal vitamin D serum levels.<sup>6</sup>
  - d. Radiological assessment: X-ray, MRI. Note that radiography may be helpful if the typical erosions are present, but rheumatoid nodules and radiographic erosive changes are no longer criteria for diagnosis, as they are less likely to be present in early disease.
  - e. Joint aspiration of synovial fluid.

## General Recommendations

1. Monitor progress of patients using:
  - a. RA activity score using DAS 28 at <http://www.das-score.nl/das28/en/contact.html> or <http://www.4s-dawn.com/DAS28/>
  - b. Clinical Disease Activity Index for RA at <https://bit.ly/2X5gXNV>

## Specific Treatment Plan\*

	Mild	Moderate	Severe
<b>Rheumatoid Arthritis</b>	<ul style="list-style-type: none"> <li>Tai chi<sup>7,8</sup></li> <li>Yoga<sup>9,10</sup></li> <li>Mediterranean<sup>11,12</sup> and/or vegetarian/vegan diet<sup>13,14</sup></li> <li><b>Theracurmin® 2X</b>: 1 capsule QD<sup>15,16</sup></li> <li><b>BioFoundation-G®</b>: 1 tablet TID<sup>17</sup></li> </ul>	<ul style="list-style-type: none"> <li>Tai chi<sup>7,8</sup></li> <li>Yoga<sup>9,10</sup></li> <li>Mediterranean<sup>11,12</sup> and/or vegetarian/vegan diet<sup>13,14</sup></li> <li><b>OptiMega-3®</b>: 5 softgels per day<sup>18,19</sup></li> <li><b>Theracurmin 2X</b>: 1 capsule QD<sup>15,16</sup></li> <li><b>BioFoundation-G</b>: 1 tablet TID<sup>17</sup></li> <li><b>Ubiquinol</b>: 100 mg QD<sup>20,21</sup></li> <li><b>Vitamin D3</b>: 1000 IU QD (up to 5000 IU QD in those with low serum levels) OR Calcitriol 500 IU per day<sup>22</sup></li> <li><b>PEA</b>: 1 capsule TID<sup>23</sup></li> </ul>	<ul style="list-style-type: none"> <li>May require the use of prescription medications as part of the integrated protocol</li> <li>Tai chi<sup>7,8</sup></li> <li>Yoga<sup>9,10</sup></li> <li>Mediterranean<sup>11,12</sup> and/or vegetarian/vegan diet<sup>13,14</sup></li> <li><b>OptiMega-3</b>: 130 mg/kg QD (6-8 softgels per day, based off weight)<sup>24</sup></li> <li><b>Theracurmin 2X</b>: 1 capsule BID<sup>15,16</sup></li> <li><b>BioFoundation-G</b>: 1 tablet TID<sup>17</sup></li> <li><b>Ubiquinol</b>: 100 mg QD<sup>20,21</sup></li> <li>Vitamin D3 plus calcium, especially for patients using corticosteroid therapy<sup>25</sup></li> <li><b>PEA</b>: 1 capsule TID<sup>23</sup></li> </ul>

QD: daily; BID: two times per day; TID: three times per day; QID: four times per day; PEA: Palmitoylethanolamide

\*Caution: Contraindications exist for patients taking warfarin.

## Re-Assessment

Repeat clinical and laboratory measurements as indicated.

### REFERENCES:

- Arthritis Society. (2020). Rheumatoid Arthritis. Retrieved from [https://arthritis.ca/about-arthritis/arthritis-types-\(a-z\)/types/rheumatoid-arthritis](https://arthritis.ca/about-arthritis/arthritis-types-(a-z)/types/rheumatoid-arthritis)
- Wasserman, A. (2018). Rheumatoid arthritis: common questions about diagnosis and management. *American Family Physician*, 97(7), 455-462.
- Combe, B., Benessiano, J., Berenbaum, F., et al. (2007). The ESPOIR cohort: a ten-year follow-up of early arthritis in France: methodology and baseline characteristics of the 813 included patients. *Joint Bone Spine*, 74(5), 440-445.
- Herly, M., Stengaard-Pedersen, K., Vestergaard, P., et al. (2018). The D-vitamin metabolite 1,25(OH)2 D in serum is associated with disease activity and anti-citrullinated protein antibodies in active and treatment naïve, early rheumatoid arthritis patients. *Scandinavian Journal of Immunology*, 88(3), e12704.
- Lee, Y.H., & Bae, S.C. (2016). Vitamin D level in rheumatoid arthritis and its correlation with the disease activity: a meta-analysis. *Clinical and Experimental Rheumatology*, 34(5), 827-833.
- Mukhtar, M., Sheikh, N., Suqaina, S.K., et al. (2019). Vitamin D receptor gene polymorphism: an important predictor of arthritis development. *Biomed Research International*, 2019, 8326246.
- Wang, C. (2008). Tai Chi improves pain and functional status in adults with rheumatoid arthritis: results of a pilot single-blinded randomized controlled trial. *Medicine and Sport Science*, 52, 218-229.
- Mudano, A.S., Tugwell, P., Wells, G.A., et al. (2019). Tai Chi for rheumatoid arthritis. *Cochrane Database Systematic Reviews*, 9(9), CD004849.
- Badsha, H., Chhabra, V., Leibman, C., et al. (2009). The benefits of yoga for rheumatoid arthritis: results of a preliminary, structured 8-week program. *Rheumatology International*, 29, 1417-1421.
- Gautam, S., Tolahunase, M., Kumar, U., et al. (2019). Impact of yoga based mind-body intervention on systemic inflammatory markers and co-morbid depression in active Rheumatoid arthritis patients: A randomized controlled trial. *Restorative Neurology and Neuroscience*, 37(1), 41-59.
- García-Morales, J.M., Lozada-Mellado, M., Hinojosa-Azaola, A., et al. (2019). Effect of a Dynamic Exercise Program in Combination With Mediterranean Diet on Quality of Life in Women With Rheumatoid Arthritis. *Journal of Clinical Rheumatology*. 10.1097
- Badsha, H. (2018). Role of Diet in Influencing Rheumatoid Arthritis Disease Activity. *Open Rheumatology Journal*, 12, 19-28.
- Kjeldsen-Kragh, J. (1999). Rheumatoid arthritis treated with vegetarian diets. *American Journal of Clinical Nutrition*, 70(3 Suppl), 594S-600S.
- Alwarith, J., Kahleova, H., Rembert, E., et al. (2019). Nutrition interventions in rheumatoid arthritis: the potential use of plant-based diets. A review. *Frontiers in Nutrition*, 6, 141.
- Chandran, B., & Goel, A. (2012). A randomized, pilot study to assess the efficacy and safety of curcumin in patients with active rheumatoid arthritis. *Phytotherapy Research*, 26, 1719-1725.
- Daily, J.W., Yang, M., & Park, S. (2016). Efficacy of turmeric extracts and curcumin for alleviating the symptoms of joint arthritis: a systematic review and meta-analysis of randomized clinical trials. *Journal of Medicinal Food*, 19(8), 717-729.
- Kremer, J.M., & Bigaouette, J. (1996). Nutrient intake of patients with rheumatoid arthritis is deficient in pyridoxine, zinc, copper, and magnesium. *Journal of Rheumatology*, 23(6), 990-994.
- Goldberg, R.J., & Katz, J. (2007). A meta-analysis of the analgesic effects of omega-3 polyunsaturated fatty acid supplementation for inflammatory joint pain. *Pain*, 129, 210-223.
- Rajaei, E., Mowla, K., Ghorbani, A., et al. (2015). The effect of omega-3 fatty acids in patients with active rheumatoid arthritis receiving DMARDS therapy: double-blind randomized controlled trial. *Global Journal of Health Sciences*, 8(7), 18-25.
- Nachvak, S.M., Alipour, B., Mahdavi, A.M., et al. (2019). Effects of coenzyme Q10 supplementation on matrix metalloproteinases and DAS-28 in patients with rheumatoid arthritis: a randomized, double-blind, placebo-controlled clinical trial. *Clinical Rheumatology*, 38(12), 3367-3374.
- Abdollahzad, H., Aghdashi, M.A., Asghari Jafarabadi, M., et al. (2015). Effects of coenzyme Q10 supplementation on inflammatory cytokines (TNF- $\alpha$ , IL-6) and oxidative stress in rheumatoid arthritis patients: A randomized controlled trial. *Archives of Medical Research*, 46(7), 527-533.
- Gopinath, K., & Danda, D. (2011). Supplementation of 1,25 dihydroxy vitamin D3 in patients with treatment naïve early rheumatoid arthritis: a randomised controlled trial. *International Journal of Rheumatoid Disorders*, 14, 332-339.
- Artukoglu, B.B., Beyer, C., Zuloff-Shani, A., et al. (2017). Efficacy of palmitoylethanolamide for pain: A meta-analysis. *Pain Physician*, 20(5), 353-362.
- Kremer, J.M., Lawrence, D.A., Pettrillo, G.F., et al. (1995). Effects of high-dose fish oil on rheumatoid arthritis after stopping nonsteroidal antiinflammatory drugs. Clinical and immune correlates. *Arthritis & Rheumatology*, 38, 1107-1114.
- Buckley, L.M., Leib, E.S., Cartularo, K.S., et al. (1996). Calcium and vitamin D3 supplementation prevents bone loss in the spine secondary to low-dose corticosteroids in patients with rheumatoid arthritis. A randomized, double-blind, placebo-controlled trial. *Annals of Internal Medicine*, 125, 961-968.

## Weight Loss

### WHAT IS THE EXTENT OF THE PROBLEM?

As the prevalence of overweight and obesity continues to rise, the resultant complications and associated morbidities take an ever increasing toll on those affected, as well as on total health-care costs. Analysis from the National Health and Nutrition Examination Survey (NHANES) 2003-2004 revealed that 17.1% of US children and adolescents were overweight, and 66.3% of adults were either overweight or obese.<sup>1</sup>

Furthermore, obesity has been found to be underdiagnosed in outpatient settings according to a recent analysis. Only 29% of visits by adult patients who were obese—according to their body mass index (BMI)—had a documented diagnosis of obesity,<sup>2</sup> while only 63% of adolescents have both their height and weight measured annually; very few receive diet or exercise counselling.<sup>3</sup>

Even more concerning are the predictions for future rates of overweight and obesity based on current trends. Using NHANES data, researchers from the Johns Hopkins Bloomberg School of Public Health predict that by 2030, 86.3% of all US adults will be overweight or obese, with more than half obese. They predict that by 2048 all adults will be overweight or obese if the trends in weight gain continue. Additionally, a doubling in total healthcare costs attributable to obesity/overweight every decade to \$860.7-\$956.9 billion US dollars is expected by 2030, accounting for 16-18% of total US healthcare costs.<sup>4</sup>

### HOW ARE OBESITY AND OVERWEIGHT DEFINED?

In adults, overweight is defined as a BMI of 25.0 to 29.9 kg/m<sup>2</sup>, and obesity is defined as a BMI ≥ 30 kg/m<sup>2</sup>. The definition in children and adolescents (age 2-18) has not been as clearly defined, but in 2005 the Institute of Medicine defined obesity in this age group as a BMI of > 30 kg/m<sup>2</sup>, or 95<sup>th</sup> percentile for age and gender (whichever is smaller). Prior to this definition, children in these categories of weight were termed overweight, but not obese; the definition change reflects a growing concern for the magnitude of the problem in children, as well as in adults.<sup>5</sup>

Although BMI is perhaps the easiest to assess and the most frequently used measure of weight, it is also the least useful anthropometric index. As discussed below, other markers such as waist circumference or the waist-to-hip ratio appear to be better predictors of risk.

### WHAT ARE SOME OF THE CAUSES OF WEIGHT GAIN?

#### Food choices and inactivity

Certainly, a sedentary lifestyle combined with a nutrient-poor, but calorie-rich diet contributes greatly to the obesity epidemic

in the US. For example, consumption of sugar-sweetened beverages (SSBs) have been linked to the obesity epidemic, and from 1977 to 2001, energy intake from soft drinks and fruit drinks increased by 135%. Analysis of NHANES data also shows that the number of individuals that consume SSBs daily has increased to 63%, combined with an increase in portion size. They also found SSB consumption to be highest in those groups most at risk for obesity and Type 2 diabetes.<sup>6</sup> This increase has affected children too—NHANES 1999-2004 data shows that children and adolescents now derive 10% to 15% of their total calories from sugar-sweetened beverages and 100% fruit juice, with increasing consumption in all age groups.<sup>7</sup>

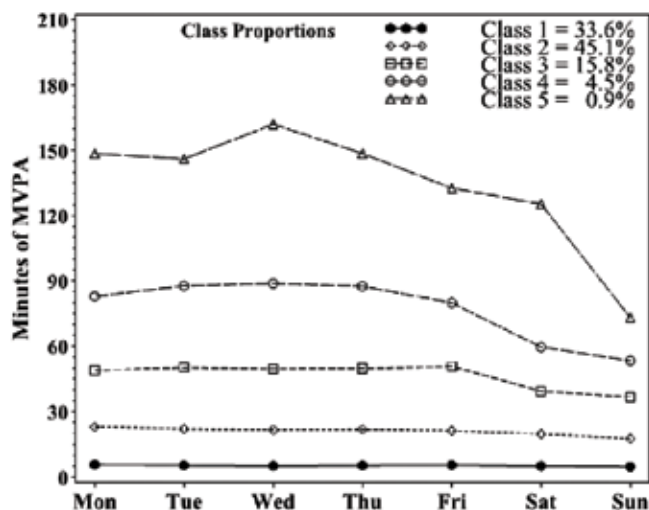


Figure 1\* Five latent classes: MVPA. Class proportions have been weighted to account for the complex sample design.

Along with the increased consumption of empty calories has come a decrease in physical activity. Epidemiological data from the NHANES 2003-2004 study found that 34% of the entire US population averages 5.3 minutes of moderate to vigorous physical activity (MVPA) per day, while another 45% had a mean of 21 minutes per day. This means that 79% of the US population is falling short of minimum recommendations for physical activity (See Figure 1).<sup>8</sup>

When an increase in calories is combined with a decrease in physical activity, the energy gap between calories consumed and calories burned widens. A recent study clearly demonstrated the relationship between physical activity, SSB intake, and not only anthropomorphic indices such as BMI, but also with that of insulin resistance (IR). In a study of nearly 7,000 ado-

lescents, increased consumption of SSBs was independently associated with increased HOMA-IR (an index of insulin resistance), systolic blood pressure, waist circumference, and BMI percentile for age and sex, as well as decreased HDL cholesterol concentrations. Higher levels of physical activity were also independently associated with decreased HOMA-IR, LDL cholesterol concentrations, triglyceride concentrations, and increased HDL cholesterol concentrations. Furthermore, low SSB intake and high physical activity levels appear to modify each other's effects of decreasing HOMA-IR and triglyceride concentrations and increasing HDL cholesterol concentrations.<sup>9</sup>

## INSULIN RESISTANCE AND INFLAMMATION

The majority of overweight and obese individuals have some degree of IR, and inflammation is now thought to be a corollary of obesity.<sup>10, 11</sup> Adipocytes have only recently been recognized as a functional endocrine organ, because they release a number of biologically-active signals, or adipokines, which influence insulin sensitivity and initiate the induction of inflammatory cytokines. Obesity leads to an increase in the number and size of adipocytes, which activates this network of inflammatory signaling pathways. While it is still unclear which precedes which, obesity and insulin resistance certainly fuel each other, making weight loss much more challenging once obesity is established.

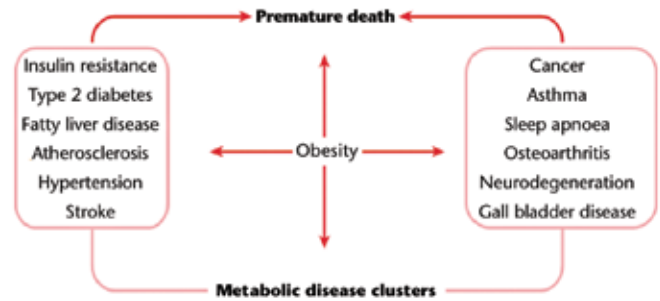
Abnormal glucose homeostasis was also found to be predictive of the amount of weight regained after weight loss, as demonstrated recently in a prospective trial. Following an oral glucose tolerance test (OGTT), subjects who had the lowest glucose concentrations were found to have the greatest risk for weight gain over time. The authors speculate that insulin resistance is responsible for this effect, given its association with weight gain, weight regain after loss, and lower blood glucose concentrations during an OGTT. This effect is likely due to the fluctuations in blood glucose levels after a meal; with poor glucose homeostasis, glucose concentrations have more significant highs and lows. It is very likely that these lows in glucose levels stimulate hunger, leading to greater appetite and calorie intake, and ultimately to weight regain.<sup>12</sup>

## WHAT ARE THE CONSEQUENCES OF EXCESS WEIGHT?

The metabolic diseases associated with overweight and obesity are many, including Type 2 diabetes, atherosclerosis, allergic disease (including food allergy), hypertension, sleep apnea, and urinary incontinence.<sup>13, 14, 15, 16</sup> While not all of the mechanisms are clearly understood, the underlying increase in systemic inflammation and insulin resistance are thought to mediate many of these consequences, which are often clustered together (See Figure 2).

## HOW IS BODY WEIGHT BEST ASSESSED?

Although BMI is the most commonly used assessment tool, other anthropometric indices appear to be better predictors of risk. This is in large part because the distribution of excess adiposity may be more important than total adiposity, a distinction which is not captured by BMI alone. Both waist circumference (WC) and waist-to-hip ratios (WHR) are better predictors of risk, because they assess abdominal/central adiposity, which is more closely associated with cardiovascular



**Figure 2 Clustering of metabolic diseases.** Obesity is considered to be a central feature that increases the risk for a vast array of diseases, with significant morbidity and mortality. In general, the mechanistic basis of the link between obesity and the diseases listed on the right are poorly understood compared with that of those listed on the left.

incident risk.<sup>17</sup> It has been suggested that WHR is a superior predictor of cardiovascular disease (CVD) risk because it includes a measurement of hip circumference, which is inversely associated with dysglycemia, dyslipidemia, diabetes, hypertension, CVD, and death. A recent study found that WHR is also a stronger predictor of subclinical atherosclerosis than either WC or BMI; the association with atherosclerotic burden was strongest for WHR, intermediate for waist circumference, and weakest for BMI, using carotid intimal medial thickness (IMT) as a marker (See Figure 3).<sup>18</sup>

Given the close connection between insulin resistance and other metabolic abnormalities, the assessment of insulin resistance, glucose, systemic inflammation, and other lipid markers should be done as part of a comprehensive evaluation.

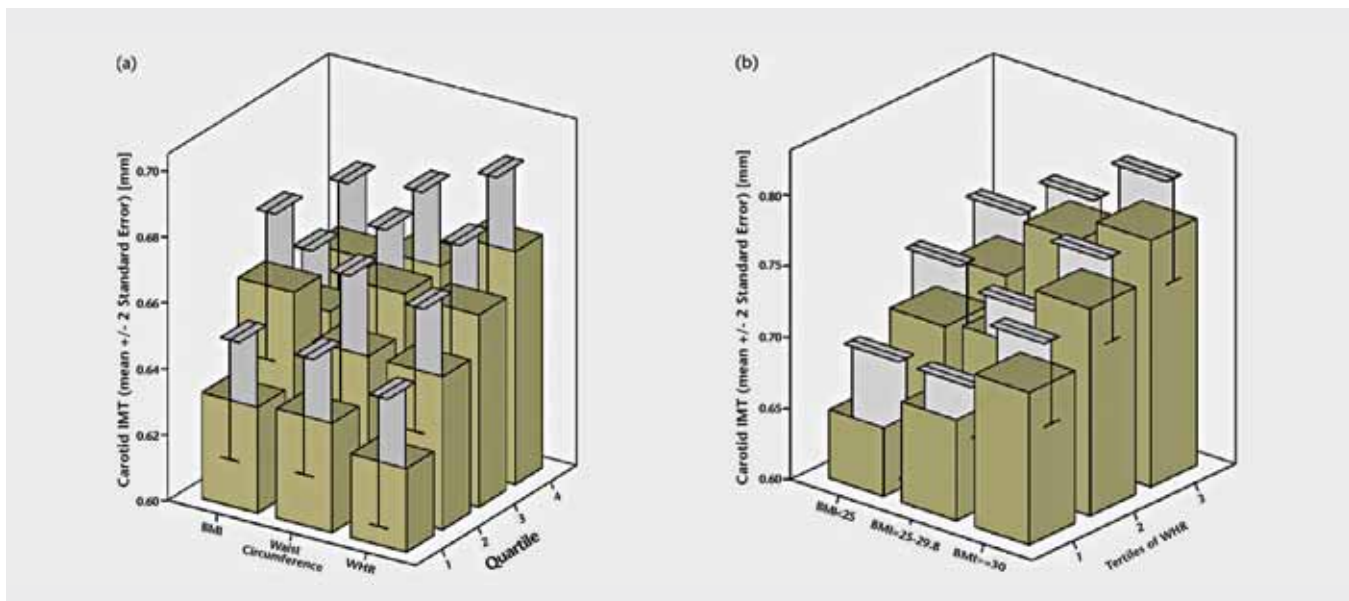
## HOW IS WEIGHT LOSS ACHIEVED?

Considering the high recidivism rate for weight regain, there may be no single program that is effective for everyone. However, a combination of dietary changes, increasing physical activity, targeting insulin resistance and inflammation, and addressing personal motivation are all powerful tools for weight loss.

### Diet & Exercise

Consistently, reduced calorie diets are associated with meaningful weight loss, often regardless of the type of macronutrients emphasized.<sup>19</sup> Calorie restricted diets also improve endothelial function in peripheral arteries within 12 weeks in overweight and obese adults.<sup>20</sup> However, it has recently been demonstrated that in response to a reduction in caloric intake, metabolic adaptations take place, which lower sedentary energy expenditure, and, in free-living adults, lead to a reduction in physical activity—two changes that may be responsible for the inability to lose weight the longer a calorie restricted diet is in place.<sup>21</sup> Certainly, calorie restriction alone is not enough to lose weight.

Although it is unclear what macronutrient composition is most associated with weight loss, a recent trial found that less favourable effects on flow-mediated vasodilatation and lipid risk factors were found with an Atkins diet compared to Ornish and South Beach diets. Specifically, saturated fat content was inversely correlated to brachial artery dilatation, and this effect



**Figure 3** Carotid intimal-medial thickness across tertiles of waist circumference by traditional body mass index categories. **a)** For BMI < 25 kg/m<sup>2</sup>: P = 0.049 for trend across waist circumference tertiles. For BMI = 25-29.9 kg/m<sup>2</sup>: P < 0.001 for trend across waist circumference tertiles. For BMI ≥ 30 kg/m<sup>2</sup>: P = 0.01 for trend across waist circumference tertiles. **b)** Carotid intimal-medial thickness across tertiles of waist-to-hip ratio by traditional body mass index categories. For BMI < 25 kg/m<sup>2</sup>: P = 0.002 for trend across WHR tertiles. For BMI = 25-29.9 kg/m<sup>2</sup>: P = 0.001 for trend across WHR tertiles. For BMI ≥ 30 kg/m<sup>2</sup>: P = 0.997 for trend across WHR tertiles.

was also seen when comparing a low-carbohydrate diet to a low-fat diet.<sup>22, 23</sup>

The Mediterranean diet has also been associated with better glycemic control in obese individuals, and, given its high compliance rate, may be more suited to addressing underlying insulin resistance.<sup>24</sup> Certainly, a low glycemic index diet rich in fruits, vegetables, and fibre that is low in saturated fat has been found to be effective not only for weight loss, but for controlling hunger. By reducing energy density with high fibre intake, satiety is reached before caloric intake is excessive.<sup>25, 26, 27</sup>

Appetite control is also improved by increasing physical activity, an effect that may be mediated by a number of gastrointestinal peptides.<sup>28, 29</sup> While the weight loss and improvements in glucose tolerance may not be different in groups that either restrict calories or increase their physical activity, there does seem to be a preservation of lean mass in those who combine moderate to vigorous exercise with caloric restriction.<sup>30, 31</sup>

While aerobic exercise is an important part of a weight loss program, resistance training appears to have unique benefits as well. Regular resistance training has been shown to improve insulin sensitivity and fasting glycemia, while reducing abdominal fat in a trial that enrolled older men with Type 2 diabetes.<sup>32</sup> And in a trial with overweight women, weight loss resulting from resistance training was found to maintain both strength and resting energy expenditure compared to women who lost weight with no exercise or with aerobic exercise.<sup>33</sup> Clearly, strength training plays an important role in preventing the drop in metabolism that is normally seen with longer term weight loss and calorie restriction. Lastly, one study

suggests that the benefits to glucose homeostasis from resistance training may in part be determined by ethnicity, as African American men with Type 2 diabetes lost more weight and had greater improvements in insulin sensitivity with resistance training than did white men.<sup>34</sup>

One small study suggests that subclinical hypothyroidism may interfere with the benefits of exercise on metabolism and insulin sensitivity; this warrants thyroid function evaluation if weight loss is not occurring as expected with regular physical activity and dietary changes.<sup>35</sup>

### Supplementation

In combination with diet and exercise changes, nutritional supplementation has been shown to improve appetite control and insulin sensitivity, to reduce inflammation, and to assist with overall weight loss.

### PGX

Given the importance of dietary fibre in regulating glucose homeostasis, reducing energy density (which improves appetite control), and for minimizing glucose highs and lows that occur postprandially, the use of PolyGlycopleX (PGX) has considerable therapeutic potential for weight loss. PGX typically lowers after-meal blood glucose levels by approximately 35 to 70% and also lowers insulin secretion by approximately 40%, producing a whole body insulin sensitivity index improvement of nearly 60%. Because PGX minimizes glucose fluctuations that occur postprandially, this has the effect of reducing appetite. The glucose lows associated with poor glucose homeostasis are prevented, and hunger is reduced. In a recent trial comparing PGX, a highly-viscous fibre, to low and medium viscosity fibres,



PGX was found to have the greatest reduction in caloric and gram intake, an effect likely to lead to significant weight loss.

### Other supportive therapies include:

- **PGX® Weight Loss Meal Replacement** – contains a full spectrum of vitamins and minerals, 20 g of high quality undenatured whey protein and 5 g PGX—the dose found to control appetite and reduce cravings for several hours. It also contains medium chain triglycerides (MCTs) derived from coconuts, which have been shown to lead to greater total loss of trunk adiposity, and intraabdominal adipose tissue when compared to olive oil, likely through an increase in fat oxidation. (Available in *Double Chocolate, Very Strawberry and French Vanilla*).
- **Calm-Pro™** – contains Suntheanine L-Theanine, a natural amino acid found in green tea. Extensive research on L-Theanine shows that in higher doses (100-300 mg), it can reduce emotionally-driven food cravings and stabilize mood.<sup>36</sup>
- **Omega-3 Fatty Acids** – in addition to the reduction in inflammation and improvements in insulin sensitivity seen with n-3 fatty acids, they may also modulate satiety.

### REFERENCES

- Ogden C.L., Carroll M.D., Curtin L.R., McDowell M.A., Tabak C.J., Flegal K.M., "Prevalence of overweight and obesity in the United States," 1999-2004, *JAMA*, 2006 Apr 5; 295(13): 1549-1555.
- Ma J., Xiao L., Stafford R.S., "Underdiagnosis of obesity in adults in US outpatient settings," *Arch Intern Med*, 2009 Feb 9; 169(3): 313-134.
- Ma J., Xiao L., "Assessment of body mass index and association with adolescent preventive care in US outpatient settings," *J Adolesc Health*, 2009 May; 44(5): 502-504.
- Wang Y., Beydoun M.A., Liang L., Cabalero B., Kumanyika S.K., "Will all Americans become overweight or obese? Estimating the progression and cost of the US obesity epidemic," *Obesity (Silver Spring)*, 2008 Oct; 16(10): 2323-2330.
- Krebs N.F., Himes J.H., Jacobson D., Nicklas T.A., Guilday P., Styne D., "Assessment of child and adolescent overweight and obesity," *Pediatrics*, 2007 Dec; 120 Suppl 4: S193-S228.
- Bleich S.N., Wang Y.C., Wang Y., Gortmaker S.L., "Increasing consumption of sugar-sweetened beverages among US adults: 1988-1994 to 1999-2004," *Am J Clin Nutr*, 2009 Jan; 89(1): 372-381.
- Wang Y.C., Bleich S.N., Gortmaker S.L., "Increasing caloric contribution from sugar-sweetened beverages and 100% fruit juices among US children and adolescents, 1988-2004," *Pediatrics*, 2008 Jun; 121(6): e1604-e1614.
- Metzger J.S., Catellier D.J., Evenson K.R., Treuth M.S., Rosamond W.D., Siega-Riz A.M., "Patterns of objectively measured physical activity in the United States," *Med Sci Sports Exerc*, 2008 Apr; 40(4): 630-638.
- Bremer A.A., Auinger P., Byrd R.S., "Relationship between insulin resistance-associated metabolic parameters and anthropometric measurements with sugar-sweetened beverage intake and physical activity levels in US adolescents: findings from the 1999-2004 National Health and Nutrition Examination Survey," *Arch Pediatr Adolesc Med*, 2009 Apr; 163(4): 328-335.
- Stefan N., Kantartzis K., Machann J., et al., "Identification and characterization of metabolically benign obesity in humans," *Arch Intern Med*, 2008 Aug 11; 168(15): 1609-1616.
- Pradhan A., "Obesity, metabolic syndrome, and Type II diabetes: inflammatory basis of glucose metabolic disorders," *Nutr Rev*, 2007 Dec; 65(12 Pt 2): S152-S156.
- Boulé N.G., Chaput J.P., Doucet E., et al., "Glucose homeostasis predicts weight gain: prospective and clinical evidence," *Diabetes Metab Res Rev*, 2008 Feb; 24(2): 123-129.
- Hotamisligil G.S., "Inflammation and metabolic disorders," *Nature*, 2006 Dec 14; 444(7121): 860-867.
- Subak L.L., Wing R., West D.S., et al., "Weight loss to treat urinary incontinence in overweight and obese women," *N Engl J Med*, 2009 Jan 29; 360(5): 481-490.
- Visness C.M., London S.J., Daniels J.L., et al., "Association of obesity with IgE levels and allergy symptoms in children and adolescents: results from the National Health and Nutrition Examination Survey 2005-2006," *J Allergy Clin Immunol*, 2009 May; 123(5): 1163-1169.e4.
- Bahrami H., Bluemke D.A., Kronmal R., et al., "Novel metabolic risk factors for incident heart failure and their relationship with obesity: the MESA (Multi-Ethnic Study of Atherosclerosis) study," *J Am Coll Cardiol*, 2008 May 6; 51(18): 1775-1783.
- de Koning L., Merchant A.T., Pogue J., Anand S.S., "Waist circumference and waist-to-hip ratio as predictors of cardiovascular events: meta-regression analysis of prospective studies," *Eur Heart J*, 2007 Apr; 28(7): 850-856.
- Yan R.T., Yan A.T., Anderson T.J., et al., "The differential association between various anthropometric indices of obesity and subclinical atherosclerosis," *Atherosclerosis*, 2009 Apr 16, [Epub ahead of print].
- Sacks F.M., Bray G.A., Carey V.J., et al., "Comparison of weight-loss diets with different compositions of fat, protein, and carbohydrates," *N Engl J Med*, 2009 Feb 26; 360(9): 859-873.
- Pierce G.L., Beske S.D., Lawson B.R., et al., "Weight loss alone improves conduit and resistance artery endothelial function in young and older overweight/obese adults," *Hypertension*, 2008 Jul; 52(1): 72-79.
- Redman L.M., Heilbronn L.K., Martin C.K., de Jonge L., et al., "Metabolic and behavioral compensations in response to caloric restriction: implications for the maintenance of weight loss," *PLoS ONE*, 2009; 4(2): e4377, Epub 2009 Feb 9.
- Miller M., Beach V., Sorkin J.D., et al., "Comparative effects of three popular diets on lipids, endothelial function, and C-reactive protein during weight maintenance," *J Am Diet Assoc*, 2009 Apr; 109(4): 713-717.
- Phillips S.A., Jurva J.W., Syed A.Q., et al., "Benefit of low-fat over low-carbohydrate diet on endothelial health in obesity," *Hypertension*, 2008 Feb; 51(2): 376-382.
- Shai I., Schwarzfuchs D., Henkin Y., et al., "Weight loss with a low-carbohydrate, Mediterranean, or low-fat diet," *N Engl J Med*, 2008 Jul 17; 359(3): 229-241.
- Sartorelli D.S., Franco L.J., Cardoso M.A., "High intake of fruits and vegetables predicts weight loss in Brazilian overweight adults," *Nutr Res*, 2008 Apr; 28(4): 233-238.
- Ello-Martin J.A., Roe L.S., Ledikwe J.H., Beach A.M., Rolls B.J., "Dietary energy density in the treatment of obesity: a year-long trial comparing 2 weight-loss diets," *Am J Clin Nutr*, 2007 Jun; 85(6): 1465-1477.
- St-Onge M.P., Bosarge A., "Weight-loss diet that includes consumption of medium-chain triacylglycerol oil leads to a greater rate of weight and fat mass loss than does olive oil," *Am J Clin Nutr*, 2008 Mar; 87(3): 621-626.
- Martins C., Morgan L.M., Bloom S.R., Robertson M.D., "Effects of exercise on gut peptides, energy intake and appetite," *J Endocrinol*, 2007 May; 193(2): 251-258.
- Martins C., Robertson M.D., Morgan L.M., "Effects of exercise and restrained eating behaviour on appetite control," *Proc Nutr Soc*, 2008 Feb; 67(1): 28-41.
- Nicklas B.J., Wang X., You T., et al., "Effect of exercise intensity on abdominal fat loss during calorie restriction in overweight and obese postmenopausal women: a randomized, controlled trial," *Am J Clin Nutr*, 2009 Apr; 89(4): 1043-1052.
- Weiss E.P., Racette S.B., Villareal D.T., et al., "Improvements in glucose tolerance and insulin action induced by increasing energy expenditure or decreasing energy intake: a randomized controlled trial," *Am J Clin Nutr*, 2006 Nov; 84(5): 1033-1034.
- Ibañez J., Izquierdo M., Argüelles I., et al., "Twice-weekly progressive resistance training decreases abdominal fat and improves insulin sensitivity in older men with Type II diabetes," *Diabetes Care*, 2005 Mar; 28(3): 662-667.
- Hunter G.R., Byrne N.M., Sirikul B., et al., "Resistance training conserves fat-free mass and resting energy expenditure following weight loss," *Obesity (Silver Spring)*, 2008 May; 16(5): 1045-1051.
- Winnick J.J., Gaillard T., Schuster D.P., "Resistance training differentially affects weight loss and glucose metabolism of White and African American patients with Type II diabetes mellitus," *Ethn Dis*, 2008 Spring; 18(2): 152-156.
- Amati F., Dubé J.J., Stefanovic-Racic M., Toledo F.G., Goodpaster B.H., "Improvements in insulin sensitivity are blunted by subclinical hypothyroidism," *Med Sci Sports Exerc*, 2009 Feb; 41(2): 265-299.
- Owen G.N., Parnell H., De Bruin E.A., Rycroft J.A., "The combined effects of L-theanine and caffeine on cognitive performance and mood," *Nutr Neurosci*, 2008 Aug; 11(4): 193-198.

### FIGURES

- Metzger J.S., Catellier D.J., Evenson K.R., Treuth M.S., Rosamond W.D., Siega-Riz A.M., "Patterns of objectively measured physical activity in the United States," *Med Sci Sports Exerc*, 2008 Apr; 40(4): 636.
- Hotamisligil G.S., "Inflammation and metabolic disorders," *Nature*, 2006 Dec 14; 444(7121): 860.
- Yan R.T., Yan A.T., Anderson T.J., et al., "The differential association between various anthropometric indices of obesity and subclinical atherosclerosis," *Atherosclerosis*, 2009 Apr 16, [Epub ahead of print]:4.